

# MADICO® SAFETYSHIELD® 700

## Test Data:

### Impact

ANSI Z-97.1 . . . . . Unlimited  
 CPSC 16 CFR Part 1201 . . . . . Category II  
 EN 12,600 . . . . . 1A

### Blast Mitigation

Attachment System . . . . . GSA Performance Condition  
 4 Side FrameGard® . . . . . 3A\*  
 2 Side FrameGard . . . . . 3B  
 Day Light (No Attachment) . . . . . 3B  
 Subjected to GSA category C blast loads, 4psi 30psi/ms  
 minimum on 1/4" annealed glass. By ABS/EQE Inter-  
 national and Grendon Design Agency.

\*SafetyShield 700 with 4 side mechanical anchoring re-  
 ceives a performance condition 3A, minimal hazard, when  
 tested to GSA and ISO 16933 blast levels of 4 PSI and  
 28 PSI/ms. When installed in a day light configuration,  
 SS-700 receives a GSA level 3B and ISO minimal hazard  
 rating at 4 PSI and 28 PSI/ms.

### Accelerated Weathering

CPSC 1200 hours

### Puncture Strength

ASTM 4830 . . . . . 115 lbs.

### Tear Strength

ASTM D-2582 . . . . . 29.4 Average Tear  
 Force (Newtons)

### Surface Burn Characteristics: ASTM E-84

Flame Spread Index . . . . . "A" Rating  
 Smoke Developed Index . . . . . "A" Rating

### Ignition Properties: ASTM-D-1929-96

Flash Ignition Temp. . . . . 760° F  
 Self-Ignition Temp. . . . . 880° F

Reported values are typical properties and should not be used as a  
 specification. Since only the user is aware of the specific conditions  
 in which the product is to be used, it is the user's responsibility to  
 determine whether the product is suitable for that intended use.  
 If the specific conditions of use are critically dependent on any of  
 the properties of the product, or if you need further information of  
 any sort, contact Madico or your local Madico window film dealer.

## Properties:

### Optical Properties

#### Total Solar Energy

Transmitted . . . . . 83%  
 Reflected . . . . . 9%  
 Absorbed . . . . . 8%

#### Visible Light

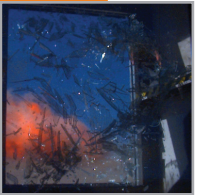
Transmitted . . . . . 88%  
 Reflected Interior . . . . . 9%  
 Reflected Exterior . . . . . 10%

"U" Factor (winter) . . . . . 1.10  
 Emissivity . . . . . 0.93  
 Ultraviolet Light Rejected . . . . . 99%

Glare Reduction . . . . . 0%  
 Luminous Efficacy . . . . . 0.91  
 Shading Coefficient . . . . . 0.97  
 Solar Heat Gain Coefficient . . . . . 0.84  
 IR Rejection . . . . . 18%  
 Total Solar Energy Rejected . . . . . 15%

### Physical Properties

Structural Component . . . . . 0.007"  
 Total Film Thickness . . . . . 0.008"  
 Structure . . . . . Single Ply  
 Tensile Strength . . . . . 25,000 PSI Average MD/TD  
 Break Strength . . . . . 175 lbs./inch (Width) Avg.  
 Adhesive Type . . . . . Acrylic Pressure Sensitive  
 Peel Strength . . . . . 5 to 6 lbs./inch



Top: Blast explosion.

Middle: Shock wave breaking untreated window. Glass fragments are blown into the building creating a deadly hazard.

Bottom: Shock wave hitting treated window with SafetyShield film and four-sided attachment system.



THE WINDOW FILM COMPANY®

A Madico SafetyShield Premier Partner

Unit 5 Power House, Higham Mead,  
 Chesham, Bucks HP5 2AH

T: 01494 797 808 info@windowfilm.co.uk

WHEREVER THERE IS GLASS, WE CAN improve IT.

All information reported to the best of our knowledge. Independent test results available upon request.